

List of Major Plants & Equipments Owned

PLANT / MODEL	CAPACITY	YEAR OF MANUFACTURED	QUANTITY
<u>Bored Piling Rig</u>			
Bauer BG36 #2088	36 ton-m	2009	1 no
Bauer BG28 #851	28 ton-m	Dec 2006	1 no
Bauer BG28 #1094	28 ton-m	2005	1 no
Soilmec R618	18 ton-m	1994	1 no
Soilmec R16	16 ton-m	1994	1 no
<u>Diaphragm Wall Grab</u>			
Soilmec Hydraulic Grab BH 7	up to 600mm	1988	1 no
Soilmec Hydraulic Grab BH 10	up to 1000mm	1988	1 no
Soilmec Hydraulic Grab BH 12	up to 1200mm	1988	1 no
<u>Bored Pile Hammer Grab</u>			
Wire Rope Hammer Grab	800mm	1980s	1 no
<u>Casing Oscillator</u>			
Bauer BV 880	900mm	1990s	1 no
Soilmec MGB 1500	1500mm	1990s	2 nos
<u>Crawler Crane</u>			
Kobelco BM900HD	90 ton	2009	1 no
Kobelco BM800HD	80 ton	Dec 2008	1 no
Sumitomo SC650	65 ton	2004	1 no
Kobelco 7065	65 ton	1995	1 no
<u>Vibro Hammer</u>			
ICE 423 (high frequency)	6 ton	1995	2 nos
<u>Excavator</u>			
Kobelco SK200-8	20 ton	2009	1 no
Caterpillar 320D	20 ton	2008	1 no
<u>Desander</u>			
Sotres 100	100 m3 / hr	1995	1 no
<u>Double Wall Casings</u>			
880 mm diameter			30m
1000 mm diameter			27m
1200 mm diameter			63m
1500 mm diameter			102m
<u>Casings</u>			
	500mm to 1800mm		
<u>Tools</u>			
Soil / rock augers, soil / rock buckets, core barrels, rock roller bit core barrels, cleaning buckets & chisels	500mm to 1800mm		



Bauer BG36 #2088



Bauer B28 #1094



Bauer BG28 #851



Soilmec R618 #1052



Soilmec R16 #1068



Soilmec BH12 DW grab



Bored Pile Hammer Grab



Kobelco BM900HD-2F



Kobelco 800HD-2F

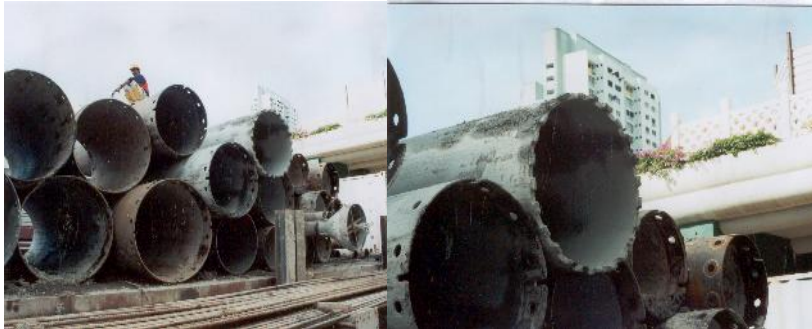


Sumitomo SC650-3



Kobelco 7065-1

SECANT PILE ACCESSORIES



Double Wall Casings (for secant pile wall)



Double Wall Casing Oscillator

ROCK TOOLS



Rock Roller Bit Core Barrel (for very hard rocks)



**Rock Boring Bucket
(for medium hard to hard rocks)**



**Round Shank Core Barrel
(for medium hard to hard rocks)**



Chisel (for hard to very hard rocks)



**As Stollen Core Barrel
(for medium hard rock & concrete)**